

# Fish in Rivers Factsheet

WRBD

Glenamoy River Catchment

Factsheet: 2017/24

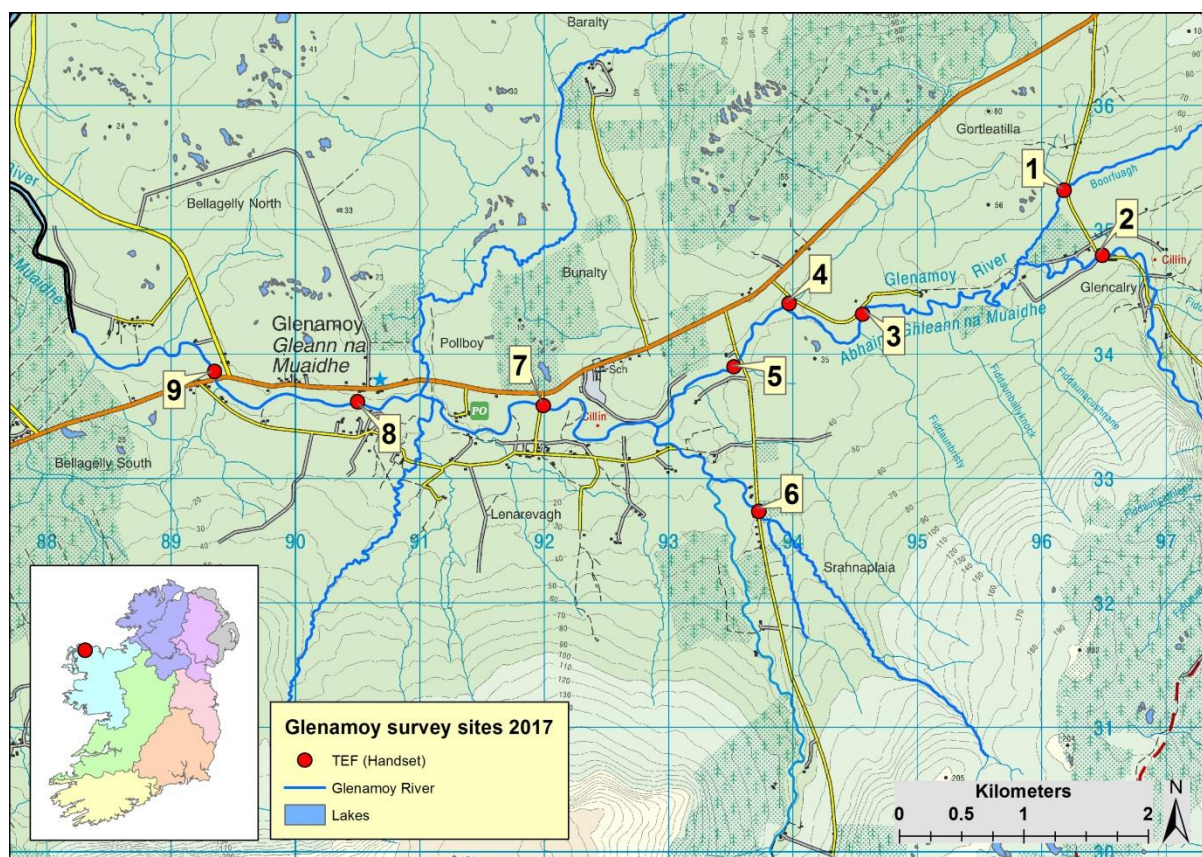
The Glenamoy River Catchment is located in the Western River Basin District and covers an area of approximately 125km<sup>2</sup>. The Glenamoy River flows in a westerly direction along the northwest coast of Co. Mayo, reaching the sea at Sruwaddacon Bay. The geology of this catchment is mainly schist, with the primary land use being peatland with pockets of

forestry and agriculture. This catchment falls within two special areas of conservation (SAC's), the Slieve Fyagh Bog SAC to the south and Glenamoy Bog Complex SAC to the north and west.

Nine sites were surveyed on the Glenamoy River Catchment between the 26<sup>th</sup> and 27<sup>th</sup> of July 2017.



**The Boorfuagh stream (Glenamoy River catchment) at Gortleatilla (Site 1)**



Map of Glenamoy Catchment electrofishing survey sites, 2017

#### Site survey details on the Glenamoy River Catchment, 2017

No.	River name	Site	Method	WFD	Date
1	Boorfuagh stream	Gortleatilla	TEF (Handset)	-	26/07/2017
2	Glenamoy River	Glencalry	TEF (Handset)	-	26/07/2017
3	Glenamoy River	Gortleatilla SW	TEF (Handset)	-	26/07/2017
4	Gortleatilla stream	Bunalty East	TEF (Handset)	-	26/07/2017
5	Glenamoy River	Bunalty Southeast	TEF (Handset)	-	27/07/2017
6	Srahnplaia stream	Srahnplaia	TEF (Handset)	-	27/07/2017
7	Glenamoy River	Cillin	Spot check	-	27/07/2017
8	Glenamoy River	Glenamoy Village	Spot check	Yes	27/07/2017
9	Glenamoy River	Glenamoy West	Spot check	-	27/07/2017

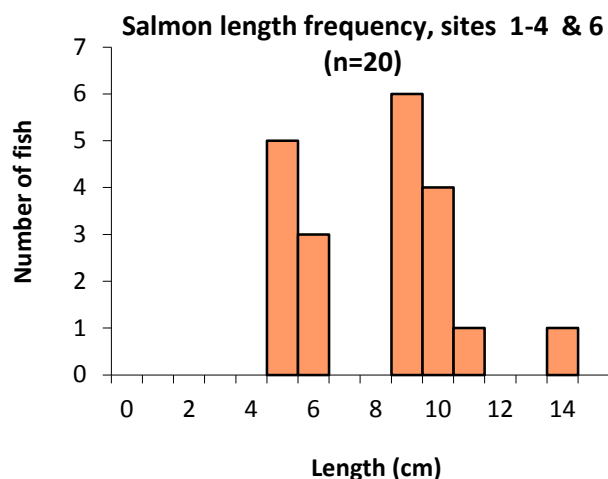
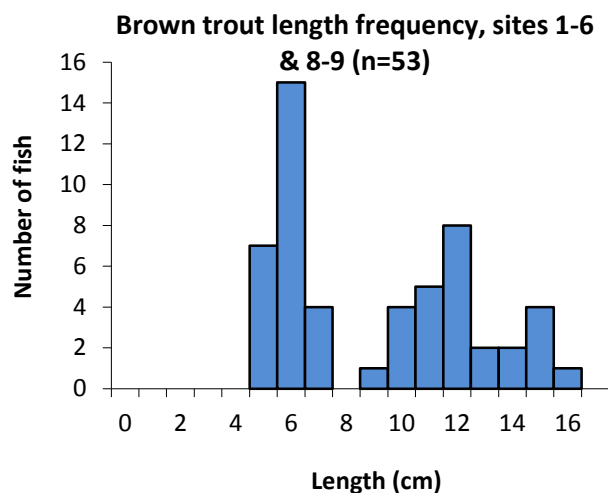
TEF (Ten-minute electrofishing), Spot check (presence/absence recorded)

Minimum density estimates (no. fish/m<sup>2</sup>)

Site no.	1	2	3	4	5
Species	2017	2017	2017	2017	2017
Brown trout	0.110	0.074	0.018	0.095	0.012
0+ Brown trout	0.024	0.059	0.009	-	0.006
1++ Brown trout	0.087	0.016	0.009	0.095	0.006
European eel	-	-	-	0.048	-
Flounder	-	-	-	-	0.006
Salmon	0.032	0.063	0.018	0.064	-
0+ Salmon	-	0.024	0.009	0.064	-
1++ Salmon	0.032	0.039	0.009	-	-
Three-spined stickleback	-	-	-	-	-
<b>All Fish</b>	<b>0.142</b>	<b>0.137</b>	<b>0.036</b>	<b>0.207</b>	<b>0.018</b>
Site no.	6	7	8	9	
Species	2017	2017	2017	2017	
Brown trout	0.250	-	Yes	Yes	
0+ Brown trout	0.101	-	Yes	-	
1++ Brown trout	0.149	-	Yes	Yes	
European eel	0.060	-	Yes	-	
Flounder	-	-	-	-	
Salmon	0.024	Yes	Yes	-	
0+ Salmon	-	Yes	Yes	-	
1++ Salmon	0.024	-	Yes	-	
Three-spined stickleback	-	-	-	-	
<b>All Fish</b>	<b>0.333</b>	<b>Spot</b>	<b>Spot</b>	<b>Spot</b>	
<b>Yes- Present (Spot check only)</b>					



Salmonid age class structure, Glenamoy catchment, 2017



Species	Site No.	% of catch		
		0+	1+	2+
Brown trout	1	29	-	71
	2	82	18	-
	3	50	-	50
	4	-	67	33
	5	50	50	-
	6	45	41	14
	8	75	25	-
	9	-	-	100
	Salmon	1	-	50
2		38	63	-
3		50	50	-
4		100	-	-
6		-	50	50
7		100	-	-
8		33	67	-

Summary

Four fish species were recorded at nine sites surveyed on the Glenamoy River Catchment in 2017. Brown trout was the most abundant species captured. Three age classes of brown trout (0+, 1+, and 2+) and three for salmon (0+, 1+ and 2+) were encountered.

Three sites (1, 2 and 4) were assigned a fish ecological status of moderate. One site (6) was assigned good and two sites (3 and 5) were assigned poor fish status.

CITATION: Matson, R., Delanty, K., Gordon, P., O’Brian, R., Garland, D., Cierpal, D., Connor, L., Corcoran, W., Coyne, J., McLoone, P., Morrissey-McCaffrey, E., Brett, T., Ní Dhonnabhain, L. and Kelly, F.L., (2018) Sampling Fish in Rivers 2017 – Glenamoy, Factsheet No. 24. National Research Survey Programme. Inland Fisheries Ireland.

The report includes Ordnance Survey Ireland data reproduced under OSI Copyright Permit No. MP 007508. Unauthorised reproduction infringes Ordnance Survey Ireland and Government of Ireland copyright. © Ordnance Survey Ireland, 2018.

Fish ecological status, Glenamoy Catchment

Site No.	2012	2017
1	-	Moderate
2	-	Moderate
3	-	Poor
4	-	Moderate
5	-	Poor
6	-	Good
7	-	N/A
8	Good	N/A
9	-	N/A